

# STANOVANJE A-N1-S1

3 SOBNO STANOVANJE

SKUPNA POVRŠINA:

95,80 m<sup>2</sup>

(stanovanje + balkon+ shramba)

POVRŠINA STANOVANJA

1 bivalni prostor	42,43 m <sup>2</sup>
2 hodnik	5,27 m <sup>2</sup>
3 kopalnica	6,21 m <sup>2</sup>
4 spalnica	15,59 m <sup>2</sup>
5 soba 1	10,36 m <sup>2</sup>

skupaj 79,86 m<sup>2</sup>

ZUNANJA POVRŠINA

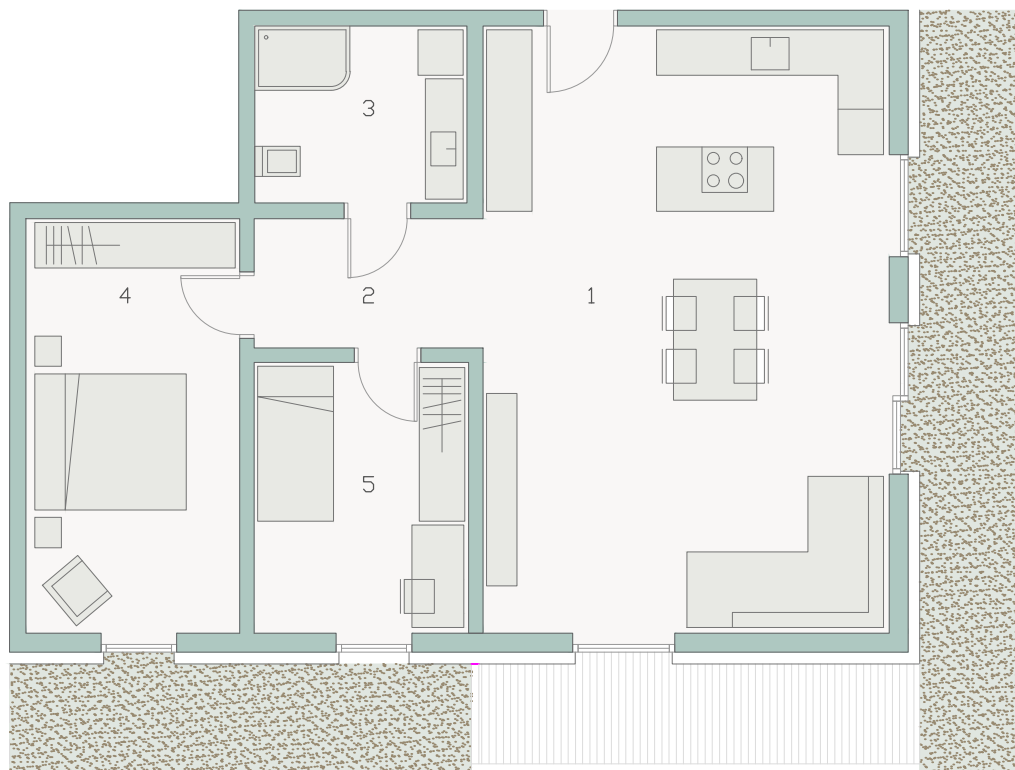
6 balkon 8,42 m<sup>2</sup>

SHRAMBA

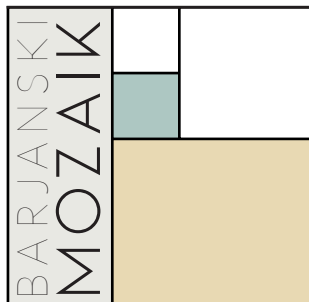
7,52 m<sup>2</sup>

PARKIRNA MESTA

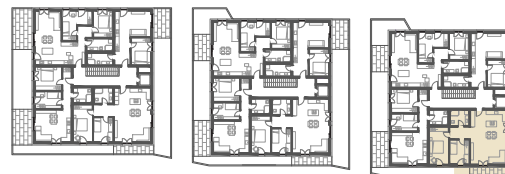
2 PM (nadkrito in nenadkrito)



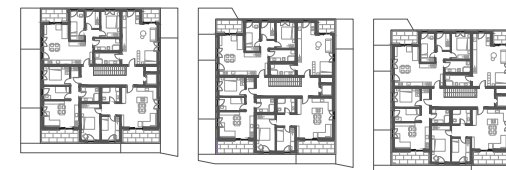
MERILO 1:100



TLORIS PRITLIČJA



TLORIS 1. NADSTROPJA



TLORIS 2. NADSTROPJA