

STANOVANJE A-N1-S3

3,5 SOBNO STANOVANJE

SKUPNA POVRŠINA:

96,01 m²

(stanovanje + balkon + shramba)

POVRŠINA STANOVANJA

1 bivalni prostor	42,99 m ²
2 hodnik	2,65 m ²
3 kopalnica	6,83 m ²
4 spalnica	11,18 m ²
5 soba 1	9,23 m ²
6 utility	5,56 m ²

skupaj 78,44 m²

ZUNANJA POVRŠINA

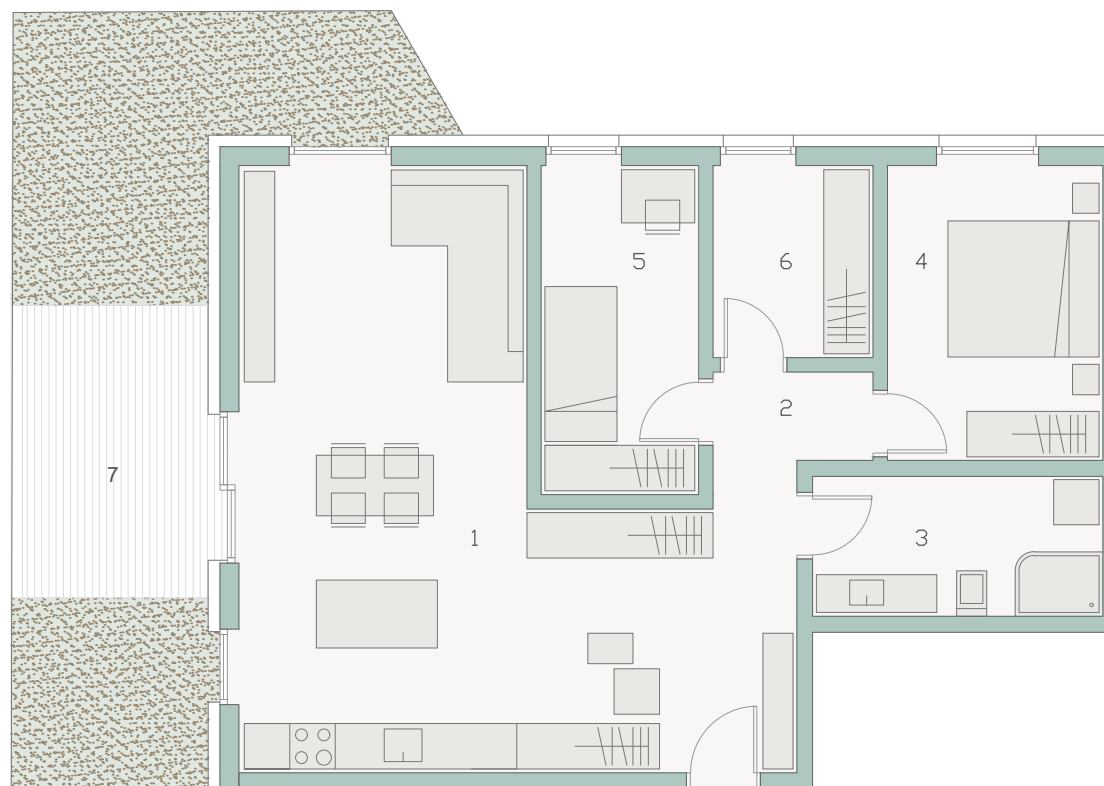
7 balkon 10,05 m²

SHRAMBA

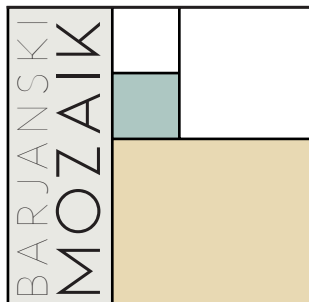
7,52 m²

PARKIRNA MESTA

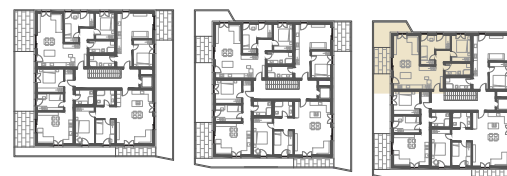
2 PM (nadkriti)



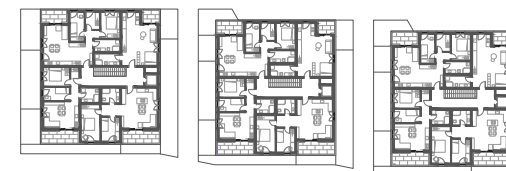
MERILO 1:100



TLORIS PRITLIČJA



TLORIS 1. NADSTROPJA



TLORIS 2. NADSTROPJA