

# STANOVANJE A-N2-S5

3 SOBNO STANOVANJE

## SKUPNA POVRŠINA:

**86,20 m<sup>2</sup>**

(stanovanje + loža + shramba)

## POVRŠINA STANOVANJA

1 bivalni prostor	32,42 m <sup>2</sup>
2 hodnik	5,09 m <sup>2</sup>
3 kopalnica	6,21 m <sup>2</sup>
4 spalnica	15,59 m <sup>2</sup>
5 soba 1	10,06 m <sup>2</sup>

skupaj 69,37 m<sup>2</sup>

## ZUNANJA POVRŠINA

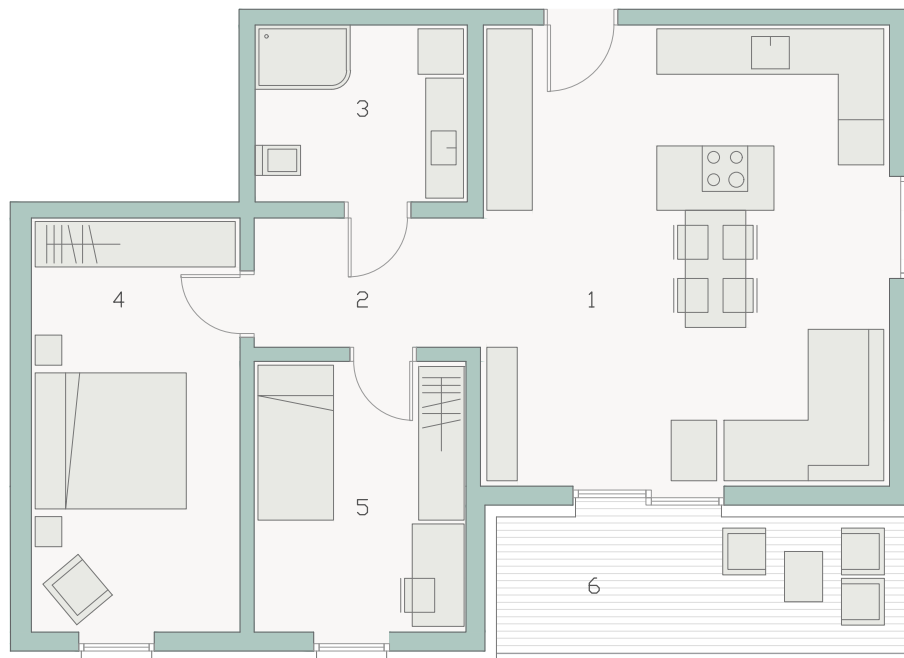
6 loža 9,31 m<sup>2</sup>

## SHRAMBA

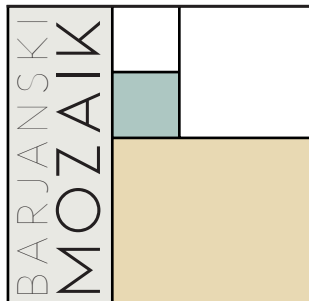
7,52 m<sup>2</sup>

## PARKIRNA MESTA

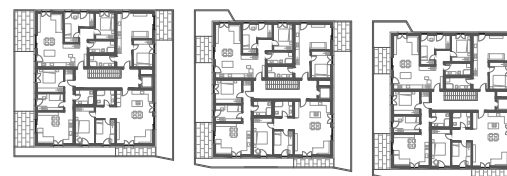
2 PM (nadkriti)



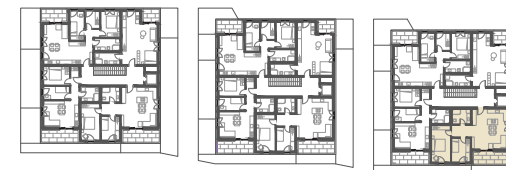
MERILO 1:100



TLORIS PRITLIČJA



TLORIS 1. NADSTROPJA



TLORIS 2. NADSTROPJA