

# STANOVANJE C-N1-S3

3,5 SOBNO STANOVANJE

## SKUPNA POVRŠINA:

**104,03 m<sup>2</sup>**

(stanovanje + balkon + shramba)

## POVRŠINA STANOVANJA

1 bivalni prostor	42,99 m <sup>2</sup>
2 hodnik	2,65 m <sup>2</sup>
3 kopalnica	6,83 m <sup>2</sup>
4 spalnica	11,18 m <sup>2</sup>
5 soba 1	9,23 m <sup>2</sup>
6 utility	5,56 m <sup>2</sup>

skupaj 78,44 m<sup>2</sup>

## ZUNANJA POVRŠINA

7 balkon 18,07 m<sup>2</sup>

## SHRAMBA

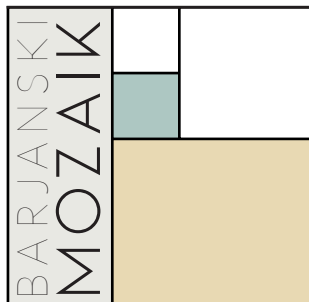
7,52 m<sup>2</sup>

## PARKIRNA MESTA

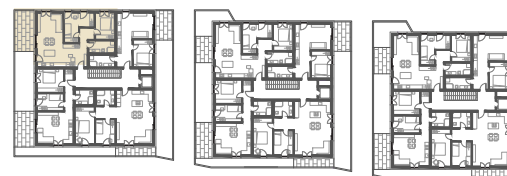
2 PM (nadkriti)



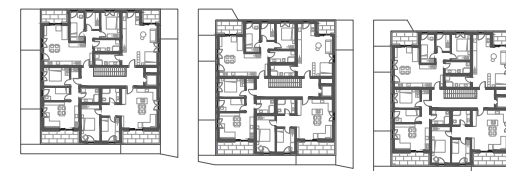
MERILO 1:100



TLORIS PRITLIČJA



TLORIS 1. NADSTROPJA



TLORIS 2. NADSTROPJA