

# STANOVANJE C-N2-S7

3,5 SOBNO STANOVANJE

## SKUPNA POVRŠINA:

**84,88 m<sup>2</sup>**

(stanovanje + loža + shramba)

## POVRŠINA STANOVANJA

|                   |                      |
|-------------------|----------------------|
| 1 bivalni prostor | 35,50m <sup>2</sup>  |
| 2 hodnik          | 2,65 m <sup>2</sup>  |
| 3 kopalnica       | 6,83 m <sup>2</sup>  |
| 4 spalnica        | 11,18 m <sup>2</sup> |
| 5 soba 1          | 9,23 m <sup>2</sup>  |
| 6 utility         | 5,56 m <sup>2</sup>  |

skupaj 70,95 m<sup>2</sup>

## ZUNANJA POVRŠINA

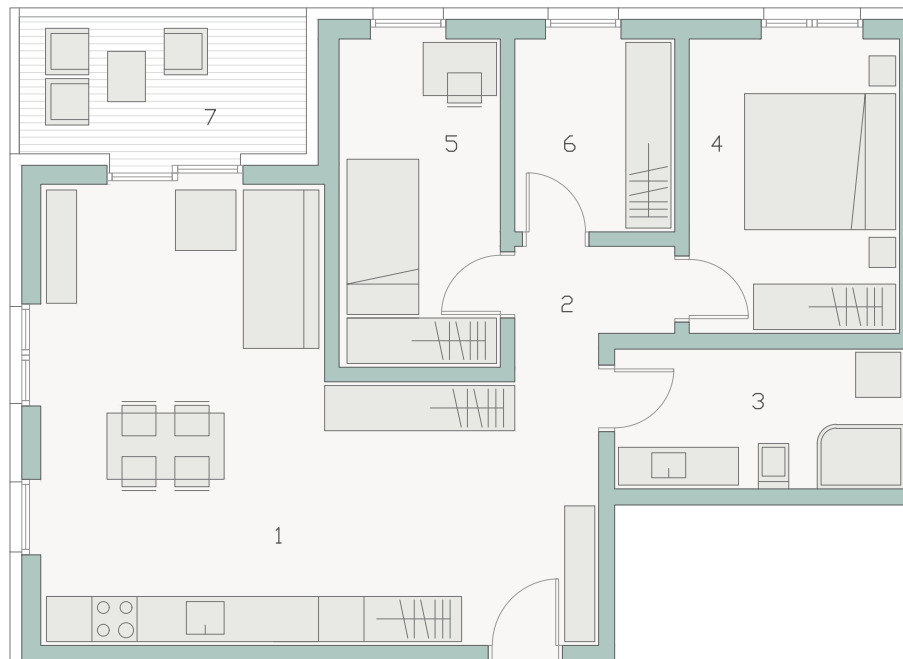
7 loža 6,41 m<sup>2</sup>

## SHRAMBA

7,52 m<sup>2</sup>

## PARKIRNA MESTA

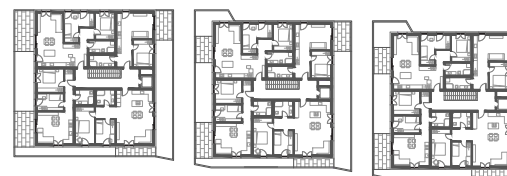
2 PM (nadkriti)



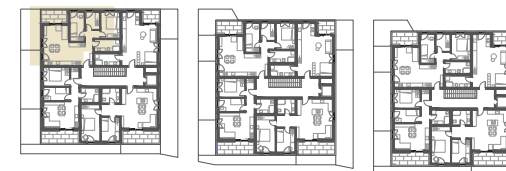
MERILO 1:100



TLORIS PRITLIČJA



TLORIS 1. NADSTROPJA



TLORIS 2. NADSTROPJA