

# STANOVANJE A-N1-S4

2 SOBNO STANOVANJE

SKUPNA POVRŠINA:  
**61,18 m<sup>2</sup>**  
(stanovanje + balkon + shramba)

## POVRŠINA STANOVANJA

|                   |                      |
|-------------------|----------------------|
| 1 bivalni prostor | 24,97 m <sup>2</sup> |
| 2 hodnik          | 4,30 m <sup>2</sup>  |
| 3 kopalnica       | 6,48 m <sup>2</sup>  |
| 4 spalnica        | 11,56 m <sup>2</sup> |

skupaj 47,31 m<sup>2</sup>

## ZUNANJA POVRŠINA

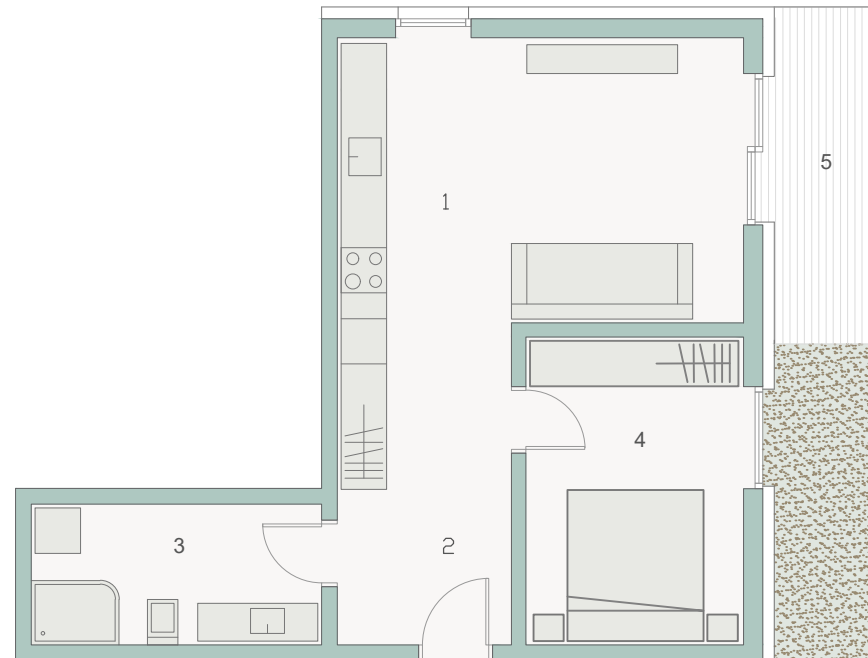
|          |                     |
|----------|---------------------|
| 5 balkon | 6,35 m <sup>2</sup> |
|----------|---------------------|

## SHRAMBA

7,52 m<sup>2</sup>

## PARKIRNA MESTA

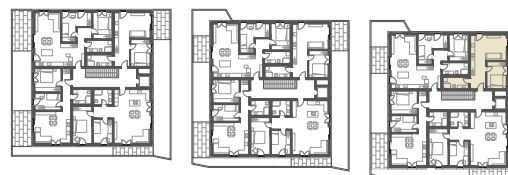
2 PM (nadkrito in nenadkrito)



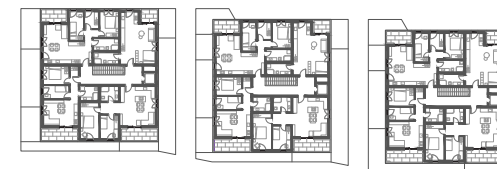
MERILO 1:100



TLORIS PRITLICJA



TLORIS 1. NADSTROPJA



TLORIS 2. NADSTROPJA

